



Child Protection and Safeguarding Policy

Introduction

The Governors and school community recognise that children have a fundamental right to be protected from harm and be kept healthy and safe. This is vital to the well-being of our children and young people, their ability to learn and their ability lead positive and as independent lives as possible. It is recognised that safeguarding incidents could happen anywhere and staff should be alert to possible concerns raised in the school. The school is committed to providing an environment which is safe and where the welfare of each child is of paramount importance. This includes a commitment to ensuring that all pupils feel confident that any concerns they may have will be acted on and listened to.

To this end, Governors and school staff are committed to ensuring that all members of the school community are aware of school responsibilities and procedures in this area. This includes communicating policies and procedures effectively with parents/carers, ensuring all staff and relevant Governors attend appropriate training and work effectively with other professionals on behalf of children in need or enquiring into allegations of child abuse. The school is committed to the guidance in Keeping Children Safe in Education 2023.

This policy should be read in conjunction with the following policies, procedures and agreements:

- Positive Behaviour policy
- Positive Handling policy
- Written Statement of Behaviour Principles
- Sexual Violence or Harassment between Children Protocols
- Intimate Care policy
- Health and safety policy
- Anti-bullying policy
- Online Safety policy
- Online Safety acceptable use agreement
- Personal mobile devices agreement
- Social Media policy
- Teaching and learning policy
- Code of conduct for staff
- Relationships and sex policy
- Attendance policy
- Equality duty
- Curriculum policy
- Remote learning policy
- Privacy notices
- Declaration of staff and the acceptable use processes

The school has also adopted the following Ealing Council guidance and procedures:

- Procedures for schools responding to allegations of abuse against teachers and other school staff
- Harassment and bullying guidelines
- Code of conduct for school employees
- Full recruitment and selection guidance
- Corporate health and safety policy
- Guidelines on the use of control and physical restraint by staff
- Guidance and procedures for school visits

The school cooperates with the Metropolitan Police in the Operation Encompass scheme that alerts the DSL if the police are called to a domestic incident within the home of a pupil.

Useful Contacts:

- Overall safeguarding: Sue Rademacher -Headteacher
- Designated Safeguarding Lead 1: Samira Assou
- Designated Safeguarding Lead 2: Parminder Tsangacos –Deputy Headteacher
- Designated Safeguarding Lead 3: Aidan Meech –Deputy Headteacher
- Designated Link Safeguarding Governor: Jennifer Flanigan and Tandra Wheeler-via the school office
- JCS Family Worker: Ankita Banerjee -via the school office
- Local Authority Designated Officer (LADO): 020 8825 8930 asv@ealing.gov.uk
- Chair of Governors: -via the school office
- The Government’s Channel helpline: 020 7340 7264 (which school staff and governors can call to raise concerns about extremism with respect to a pupil)

Approved by: Full Governing Board **Date:** 16.10.2023

Last reviewed on: December 2022

Next review due by: December 2024

Contents

1. Aims	3
2. Definitions	4
3. Equality statement	4
4. Roles and responsibilities	5
5. Confidentiality.....	7
6. Recognising abuse and taking action.....	7
7. Notifying parents.....	16
8. Pupils with special educational needs and disabilities	16
9. Online Safety	18
10. Complaints and concerns about school safeguarding policies	20
11. Record-keeping.....	20
12. Training	211
13. Monitoring arrangements	22
14. Links with other policies, procedures and agreements.....	22
Appendix 1: types of abuse	23
Appendix 2: safer recruitment and DBS checks – policy and procedures.....	24
Appendix 3: allegations of abuse made against staff.....	27
Appendix 4: specific safeguarding issues.....	30

1. Aims

At John Chilton School we are committed to safeguarding children and young people and we expect everyone who works in our school to share this commitment.

Adults in our school take all welfare concerns seriously and encourage children and young people to talk to us about anything that worries them.

We will always act in the best interest of the child. We recognise that children may not be ready to talk about their experiences. Staff should share any concerns they have about a child with the Designated Safeguarding Lead. However, it should be remembered that sometimes children will not feel ready or know how to tell someone that they are being abused, exploited, or neglected, and/or they may not recognise their experiences as harmful.

At John Chilton School pupils are taught about safeguarding and how they can keep themselves and others safe, including online, through various teaching and learning opportunities, as part of providing a broad and balanced curriculum. To be effective, we present this information in an age-appropriate way. We are sensitive to the specific needs and vulnerabilities of individual children, including children who are victims of abuse, and children with special educational needs or disabilities. The school recognises that preventative education is most effective in the context of a whole-school approach that prepares pupils and students for life in modern Britain and creates a culture of zero tolerance for sexism, misogyny/misandry, homophobia, biphobic, transphobic and sexual violence/harassment. Policies and procedures developed by the school underpin these ideals. The teaching programmes are fully inclusive and are devised to be age and developmental stage appropriate for the needs of the pupils in the school.

Children are taught to recognise when they are at risk and how to get help when they need it; for example:

- Recognising the colour lanyards of adults and what they mean. Sessions in class and posters around the school. Pupils are reminded and asked often and when checked will tell a familiar adult.
- Sessions from teachers, RSE lead and visiting professional groups on relevant topics- for example: the theme of Healthy Relationships; film and poster making activities to consolidate. Childline posters around the school.
- Intimate care routines are clearly explained and practiced. Pupils have appropriate symbols on communication aids and are asked about their experiences.

The school assesses the risks and issues in the wider community when considering the well-being and safety of its pupils. "Children can be at risk of abuse or exploitation in situations outside their families. Extra-familial harms take a variety of different forms and children can be vulnerable to multiple harms including (but not limited to) sexual abuse (including harassment and exploitation), domestic abuse in their own intimate relationships (teenage relationship abuse), criminal exploitation, serious youth violence, county lines, and radicalisation." (KCSIE 2023)

The school aims to ensure that:

- To raise awareness of all school staff and Governors of the importance of safeguarding and child protection (SCP), and in particular to make clear responsibilities (including statutory) for identifying and reporting actual or suspected abuse.
- To ensure pupils, parents and carers are aware that the school takes SCP seriously and will follow the appropriate procedures for identifying and reporting abuse and for dealing with allegations against staff.
- To promote effective liaison with other agencies in order to work together for the welfare and protection of all pupils.
- To support pupils' development in a way that will foster security, confidence and independence.
- To ensure that pupils are taught about looking out for their own and each other's' safety and what to do if they feel they are not safe.
- To make appropriate links and reference to policies in related areas such as discipline and bullying.

2. Definitions

Safeguarding and promoting the welfare of children means:

- Protecting children from maltreatment
- Preventing impairment of children's mental and physical health or development
- Ensuring that children grow up in circumstances consistent with the provision of safe and effective care
- Taking action to enable all children to have the best outcomes

Child protection is part of this definition and refers to activities undertaken to prevent children suffering, or being likely to suffer, significant harm.

Abuse is a form of maltreatment of a child, and may involve inflicting harm or failing to act to prevent harm. Harm can include ill treatment that is not physical as well as the impact of witnessing ill treatment of others. This can be particularly relevant, for example, in relation to the impact on children of all forms of domestic abuse. Children may be abused in a family or in an institutional or community setting by those known to them or, more rarely, by others. Abuse can take place wholly online, or technology may be used to facilitate offline abuse. Children may be abused by an adult or adults or by another child or children. Appendix 1 explains the different types of abuse.

Neglect is a form of abuse and is the persistent failure to meet a child's basic physical and/or psychological needs, likely to result in the serious impairment of the child's health or development. Appendix 1 defines neglect in more detail.

Sharing nudes and semi-nudes (also known as youth produced sexual imagery) is the sharing of sexual imagery (photos or videos) by children

Children includes everyone under the age of 18.

The following **3 safeguarding partners** are identified in Keeping Children Safe in Education (and defined in the Children Act 2004, as amended by chapter 2 of the Children and Social Work Act 2017). They will make arrangements to work together to safeguard and promote the welfare of local children, including identifying and responding to their needs:

- The local authority (LA)
- A clinical commissioning group for an area within the LA
- The chief officer of police for a police area in the LA area

Operation Encompass

At John Chilton School we are working in partnership with the Metropolitan Police and Children's Services to identify and provide appropriate support to pupils who have experienced domestic incidents; this scheme is called Operation Encompass.

More information is provided in Appendix 4 – Domestic Abuse

3. Equality statement

Some children have an increased risk of abuse, and additional barriers can exist for some children with respect to recognising or disclosing it. We are committed to anti-discriminatory practice and recognise children's diverse circumstances. We ensure that all children have the same protection, regardless of any barriers they may face.

We give special consideration to children who:

- Have special educational needs (SEN) or disabilities (see section 9)
- Are young carers
- May experience discrimination due to their race, ethnicity, religion, gender identification or sexuality
- Have English as an additional language

- Are known to be living in difficult situations – for example, temporary accommodation or where there are issues such as substance abuse or domestic violence
- Are at risk of FGM, sexual exploitation, forced marriage, or radicalisation
- Are asylum seekers
- Are at risk due to either their own or a family member’s mental health needs
- Are looked after or previously looked after

4. Roles and responsibilities

Safeguarding and child protection is **everyone’s** responsibility. This policy applies to all staff, volunteers and governors in the school and is consistent with the procedures of the 3 safeguarding partners. Our policy and procedures also apply to extended school and off-site activities.

4.1 All staff

All staff will read and understand part 1 and Annex A of the Department for Education’s statutory safeguarding guidance, Keeping Children Safe in Education, and review this guidance at least annually.

All staff will be aware of:

- Our systems which support safeguarding, including this child protection and safeguarding policy, the staff code of conduct, the role and identity of the designated safeguarding lead (DSL) and deputies, the behaviour policy, and the safeguarding response to children who go missing from education
- The early help process (sometimes known as the common assessment framework) and their role in it, including identifying emerging problems, liaising with the DSL, and sharing information with other professionals to support early identification and assessment
- The process for making referrals to local authority children’s social care and for statutory assessments that may follow a referral, including the role they might be expected to play
- What to do if they identify a safeguarding issue or a child tells them they are being abused or neglected, including specific issues such as FGM, and how to maintain an appropriate level of confidentiality while liaising with relevant professionals
- The signs of different types of abuse and neglect, as well as specific safeguarding issues, such as child sexual exploitation (CSE), FGM and radicalisation

Section 13 and appendix 4 of this policy outline in more detail how staff are supported to do this.

4.2 The Designated Safeguarding Lead (DSL)

The DSL is a member of the senior leadership team; the DSL takes lead responsibility for child protection and wider safeguarding.

The key role of the Designated Safeguarding Lead is to:

- manage referrals from school staff or any others from outside the school;
- work with external agencies and professionals on matter of safety and safeguarding;
- undertake training every two years and refresh their knowledge and skills at regular intervals, at least annually;
- raise awareness of safeguarding and child protection amongst the staff and parents; and
- ensure that child protection information is transferred to the pupil’s new school
- be aware of pupils who have a social worker
- help promote educational outcomes by sharing the information about the welfare, safeguarding and child protection issues with teachers and school and college leadership staff.
- work with others to ensure that the school’s filtering and monitoring systems are functional and effective

During term time, the DSL will be available during school hours for staff to discuss any safeguarding concerns.

During school events out of school hours, one of the DSLs can be contacted:

- on the school mobile phone: **07783 887 505**
- by email: sassou@john-chilton.ealing.sch.uk

When the DSL is absent, the deputy DSLs – the Deputy Headteachers – will act as cover.

The DSL will be given the time, funding, training, resources and support to:

- Provide advice and support to other staff on child welfare and child protection matters
- Take part in strategy discussions and inter-agency meetings and/or support other staff to do so
- Contribute to the assessment of children
- Refer suspected cases, as appropriate, to the relevant body (local authority children’s social care, Channel programme, Disclosure and Barring Service, and/or police), and support staff who make such referrals directly. They will be aware of the requirement for children to have an Appropriate Adult.

The DSL will also liaise with local authority case managers and designated officers for child protection concerns as appropriate.

The full responsibilities of the DSL and deputy DSLs are set out in their job description.

4.3 The Governing Board

The governing board will approve this policy at each review, ensure it complies with the law and hold the headteacher to account for its implementation.

The governing board will appoint a link governor to monitor the effectiveness of this policy in conjunction with the full governing board. This is always a different person from the DSL.

The chair of governors will act as the ‘case manager’ in the event that an allegation of abuse is made against the headteacher, where appropriate (see appendix 3).

All governors will read Keeping Children Safe in Education.

Section 13 has information on how governors are supported to fulfil their role.

4.4 The Headteacher

The Headteacher is responsible for the implementation of this policy, including:

- Ensuring that staff (including temporary staff) and volunteers are informed of our systems which support safeguarding, including this policy, as part of their induction
- Communicating this policy to parents when their child joins the school and via the school website
- Ensuring that the DSL has appropriate time, funding, training and resources, and that there is always adequate cover if the DSL is absent
- Ensuring that all staff undertake appropriate safeguarding and child protection training and update this regularly
- Acting as the ‘case manager’ in the event of an allegation of abuse made against another member of staff or volunteer, where appropriate (see appendix 3)
- Ensuring the relevant staffing ratios are met, where applicable
- Making sure each child in the Early Years Foundation Stage is assigned a key person

5. Confidentiality

Governors accept that CP raises issues of confidentiality, which should be clearly understood by all staff and Governors.

- Timely information sharing is essential to effective safeguarding
- Fears about sharing information must not be allowed to stand in the way of the need to promote the welfare, and protect the safety, of children
- The Data Protection Act (DPA) 2018 and GDPR do not prevent, or limit, the sharing of information for the purposes of keeping children safe
- If staff need to share ‘special category personal data’, the DPA 2018 contains ‘safeguarding of children and individuals at risk’ as a processing condition that allows practitioners to share information without consent if it is not possible to gain consent, it cannot be reasonably expected that a practitioner gains consent, or if to gain consent would place a child at risk
- Staff should never promise a child that they will not tell anyone about a report of abuse, as this may not be in the child’s best interests
- The government’s information sharing advice for safeguarding practitioners includes 7 ‘golden rules’ for sharing information, and will support staff who have to make decisions about sharing information
- If staff are in any doubt about sharing information, they should speak to the designated safeguarding lead (or deputy)
- Confidentiality is also addressed in this policy with respect to record-keeping in section 12, and allegations of abuse against staff in appendix 3

6. Recognising abuse and taking action

Staff, volunteers and governors must follow the procedures set out below in the event of a safeguarding issue.

Please note – in this and subsequent sections, any references to the DSL means “the DSL (or deputy DSL)”.

6.1 If a child is suffering or likely to suffer from harm, or in immediate danger

Make a referral to children’s social care and/or the police **immediately** if you believe a child is suffering or likely to suffer from harm, or in immediate danger. **Anyone can make a referral.**

Tell the DSL (see section 5.2) as soon as possible if you make a referral directly.

In the event that an urgent referral has to be made, for children whose family live in Ealing, the DSL will contact Ealing Social Services. If the child is already known to the Children with Disabilities Team or has been an open case to a member of that team within the last three months, she will contact the social worker concerned or the team’s duty worker. Otherwise she will refer to the Contact Centre (020 8825 8000). This number is displayed both in the main school office and in the Headteacher’s office. The Out of Hours Emergency Team takes referrals from 5 p.m. and can be contacted on 020 8825 5000. For pupils who live in other Local Authorities, the relevant Social Services will be contacted.

6.2 If a child makes a disclosure to you

If a child discloses a safeguarding issue to you, you should:

- Listen to and believe them. Allow them time to talk freely and do not ask leading questions
- Stay calm and do not show that you are shocked or upset
- Tell the child they have done the right thing in telling you. Do not tell them they should have told you sooner
- Explain what will happen next and that you will have to pass this information on. Do not promise to keep it a secret

- Write up your conversation as soon as possible in the child’s own words. Stick to the facts, and do not put your own judgement on it
- Sign and date the write-up and pass it on to the DSL using My Concern where possible; if urgent-speak to a DSL immediately. Alternatively, if appropriate, make a referral to children’s social care and/or the police directly (see 7.1), and tell the DSL as soon as possible that you have done so.

6.3 If you discover that has taken place or a pupil is at risk of FGM

Female genital mutilation refers to procedures that intentionally alter or cause injury to the female genital organs for non-medical reasons. FGM is illegal in the UK and a form of child abuse with long-lasting, harmful consequences. It is also known as ‘female genital cutting’, ‘circumcision’ or ‘initiation’.

FGM typically takes place between birth and around 15 years old; however, it is believed that the majority of cases happen between the ages of 5 and 8.

Possible indicators that a pupil has already been subjected to FGM, and factors that suggest a pupil may be at risk, are set out in appendix 4.

Any teacher who discovers (either through disclosure by the victim or visual evidence) that an act of FGM appears to have been carried out on a **pupil under 18** must immediately report this to the police, personally. This is a statutory duty, and teachers will face disciplinary sanctions for failing to meet it.

Unless they have good reason not to, they should also discuss the case with the DSL and involve children’s social care as appropriate.

Any other member of staff who discovers that an act of FGM appears to have been carried out on a **pupil under 18** must speak to the DSL and follow our local safeguarding procedures.

Where there is a disclosure of FGM “whilst **all** staff should speak to the designated safeguarding lead (or deputy) with regard to any concerns about female genital mutilation (FGM), there is a specific **legal duty on teachers**. If a teacher, in the course of their work in the profession, discovers that an act of FGM appears to have been carried out on a girl under the age of 18, the teacher must report this to the police” (KCSIE 2023)

What teachers should do:

Below is a very short summary and must be read in conjunction with the mandatory reporting guidance. (See <http://safeguarding.link/fgmreporting>)

The mandatory reporting procedures say:

'It is recommended that you make a report orally by calling 101, the single non-emergency number.'

'Where there is a risk to life or likelihood of serious immediate harm, professionals should report the case immediately to police, including dialling 999 if appropriate'.

In most cases 'reports under the duty should be made as soon as possible after a case is discovered, and best practice is for reports to be made by the close of the next working day'.

The procedures also set out what information is needed, in order to make a report.

See here: <https://www.gov.uk/government/publications/mandatory-reporting-of-female-genital-mutilation-procedural-information/mandatory-reporting-of-female-genital-mutilation-procedural-information-accessible-version#reporting>

The duty for teachers mentioned above does not apply in cases where a pupil is *at risk* of FGM or FGM is suspected but is not known to have been carried out. Staff should not examine pupils.

Any member of staff who suspects a pupil is *at risk* of FGM or suspects that FGM has been carried out or discovers that a **pupil age 18 or over** appears to have been a victim of FGM, must speak to the DSL and follow our local safeguarding procedures.

Where JCS staff have a concern about a child, they should contact children's social care. The staff member reporting to the police and referring to social services may be Staff should not:

- contact the parents before seeking advice from children's social care

- make any attempt to mediate between the child/young person and parents.

6.4 If you have concerns about a child (as opposed to believing a child is suffering or likely to suffer from harm, or in immediate danger)

Figure 1 on page 10 illustrates the procedure to follow if you have any concerns about a child's welfare.

Where possible, speak to the DSL first to agree a course of action. Complete a new concern on My Concern and add as much detail as possible. Staff training is given to everyone on how to use the system. If in doubt, staff should seek advice from a teacher or senior leader. Notification of the new concern is automatically sent to the DSLs who will address this in a timely manner.

If in exceptional circumstances the DSLs are not available, this should not delay appropriate action being taken. Speak to a member of the senior leadership team and/or take advice from local authority children's social care. You can also seek advice at any time from the NSPCC helpline on 0808 800 5000.

Make a referral to local authority children's social care directly, if appropriate (see 'Referral' below). Share any action taken with the DSL as soon as possible.

Early help

If early help is appropriate, the DSL will generally lead on liaising with other agencies and setting up an inter-agency assessment as appropriate. Staff may be required to support other agencies and professionals in an early help assessment, in some cases acting as the lead practitioner.

The DSL will keep the case under constant review and the school will consider a referral to local authority children's social care if the situation does not seem to be improving. Timelines of interventions will be monitored and reviewed.

The Early Help Assessment and Plan (EHAP) is the process and tool Ealing uses for professionals. Supporting children and young people and their families, through the delivery of multi-agency, multi-disciplinary or targeted support. This is done as early as possible to tackle an emerging problem and issue before it becomes bigger, harder to address and affects the development or life chances of the child or children in the family.

Referral

If it is appropriate to refer the case to local authority children's social care or the police, the DSL will make the referral or support you to do so.

If you make a referral directly (see section 7.1), you must tell the DSL as soon as possible.

The local authority will make a decision within 1 working day of a referral about what course of action to take and will let the person who made the referral know the outcome. The DSL or person who made the referral must follow up with the local authority if this information is not made available, and ensure outcomes are properly recorded.

If the child's situation does not seem to be improving after the referral, the DSL or person who made the referral must follow local escalation procedures to ensure their concerns have been addressed and that the child's situation improves.

6.5 If you have concerns about extremism

As part of the Counter Terrorism and Security Act 2015, schools have a duty to 'prevent people being drawn into terrorism'. This has become known as the 'Prevent Duty'.

Where staff are concerned that children and young people are developing extremist views or show signs of becoming radicalized, they should discuss this with the Lead.

The Designated Safeguarding Lead, deputy DSLs and Learning Mentor have received training about the Prevent Duty and tackling extremism and are able to support staff with any concerns they may have.

We use the curriculum to ensure that children and young people understand how people with extreme views share these with others, especially using the internet.

Staff should be alert to changes in children's behaviour, which could indicate that they may be in need of help or protection. Staff should use their judgement in identifying children who might be at risk of radicalisation and act proportionately which may include the designated safeguarding lead (or deputy) making a Prevent referral.

We are committed to ensuring that our pupils are offered a broad and balanced curriculum that aims to prepare them for life in modern Britain. Teaching the school's core values alongside the fundamental British Values supports quality teaching and learning, whilst making a positive contribution to the development of a fair, just and civil society.

Recognising Extremism

Early indicators of radicalisation or extremism may include:

- showing sympathy for extremist causes
- glorifying violence, especially to other faiths or cultures
- making remarks or comments about being at extremist events or rallies outside school
- evidence of possessing illegal or extremist literature
- advocating messages similar to illegal organisations or other extremist groups
- out of character changes in dress, behaviour and peer relationships (but there are also very powerful narratives, programmes and networks that young people can come across online so involvement with particular groups may not be apparent.)
- secretive behaviour
- online searches or sharing extremist messages or social profiles
- intolerance of difference, including faith, culture, gender, race or sexuality
- graffiti, art work or writing that displays extremist themes
- attempts to impose extremist views or practices on others
- verbalising anti-Western or anti-British views
- advocating violence towards others

If a child is not suffering or likely to suffer from harm, or in immediate danger, where possible speak to the DSL first to agree a course of action.

If in exceptional circumstances the DSL is not available, this should not delay appropriate action being taken. Speak to a member of the senior leadership team and/or seek advice from local authority children's social care. Make a referral to local authority children's social care directly, if appropriate (see 'Referral' above).

Where there is a concern, the DSL will consider the level of risk and decide which agency to make a referral to. This could include [Channel](#), the government's programme for identifying and supporting individuals at risk of being drawn into terrorism, or the local authority children's social care team.

The Department for Education also has a dedicated telephone helpline, 020 7340 7264, which school staff and governors can call to raise concerns about extremism with respect to a pupil. You can also email counter.extremism@education.gov.uk. Note that this is not for use in emergency situations.

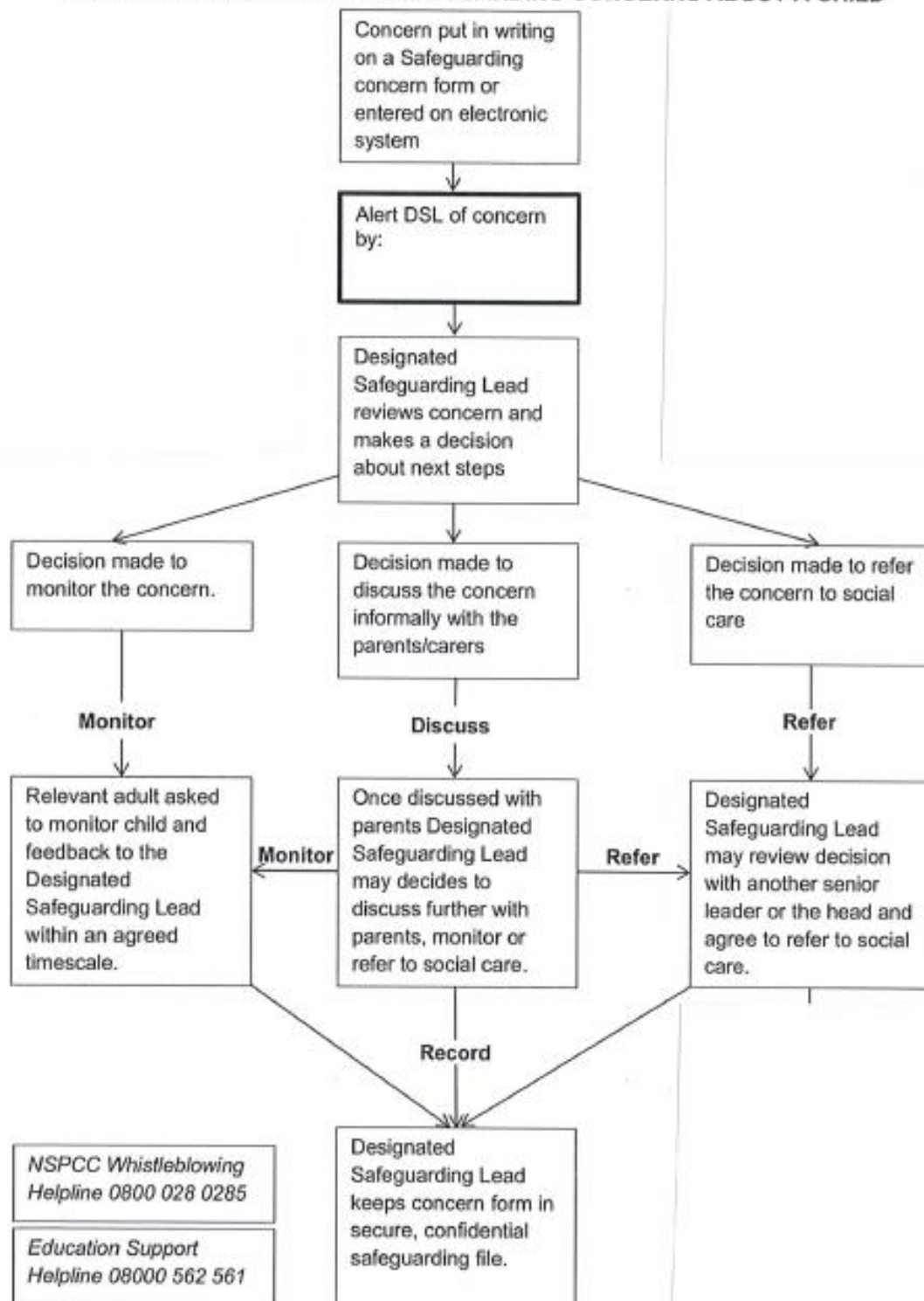
In an emergency, call 999 or the confidential anti-terrorist hotline on 0800 789 321 if you:

- Think someone is in immediate danger
- Think someone may be planning to travel to join an extremist group
- See or hear something that may be terrorist-related

Figure 1: procedure if you have concerns about a child's welfare (as opposed to believing a child is suffering or likely to suffer from harm, or in immediate danger)

(Note – if the DSL is unavailable, this should not delay action. See section 7.4 for what to do.)

FLOW CHART FOR RAISING SAFEGUARDING CONCERNS ABOUT A CHILD



Safeguarding Flowchart v.3.8.docx

www.safeguardingschools.co.uk

© 2020 Andrew Hall

6.6 Allegations or concerns about an adult working in the school whether as a teacher, supply teacher, other staff, volunteers or contractors

Governors recognise that because of their daily contact with children in a variety of situations, including a caring role, teachers and other school staff are vulnerable to accusations of abuse. We also we recognise the possibility that adults working in the school may harm children, including governors, volunteers, supply teachers and agency staff. Any concerns about the conduct of other adults in the school should be taken to the headteacher without delay; any concerns about the headteacher should go to the Chair of Governors who can be contacted through the school office.

Governors therefore expect all staff to follow the Ealing agreed procedures for responding to allegations against staff. The full procedures for dealing with allegations against staff can be found in Keeping Children Safe in Education (DfE, 2023). This will initially mean a discussion with the Designated Teacher who will be guided by the school's policy on Managing Allegations against School Staff. In the case where the allegation is against the Headteacher, this should be reported to the Chair of Governors. Staff may also raise concerns directly with Children's Child Care services. The school will take advice from the Local Authority's Designated Officer (LADO).

Staff who are the subject of an allegation have the right to have their case dealt with fairly, quickly and consistently and to be kept informed of its progress. Suspension is not the default option and alternatives to suspension will always be considered. In some cases, staff may be suspended where this is deemed to be the best way to ensure that children are protected.

Staff, parents and Governors are reminded that publication of material that may lead to the identification of a teacher who is the subject of an allegation is prohibited by law. Publication includes verbal conversations or writing, including content placed on social media sites

If you have concerns about a member of staff or volunteer, or an allegation is made about a member of staff or volunteer posing a risk of harm to children, speak to the headteacher. If the concerns/allegations are about the headteacher, speak to the chair of governors.

Concerns may come from various sources, for example, a suspicion; complaint; or disclosure made by a child, parent or other adult within or outside of the organisation; or as a result of vetting checks undertaken.

The headteacher/principal has to decide whether the concern is an allegation or low-level concern. The term 'low-level' concern does not mean that it is insignificant; it means that the behaviour towards a child does not meet the threshold for referral to the Local Authority Designated Officer (LADO) (see below).

The guidance in KCSIE (Part Four) should be followed where it is alleged that anyone working in the school or college that provides education for children under 18 years of age, including supply teachers and volunteers has:

- behaved in a way that has harmed a child, or may have harmed a child;
- possibly committed a criminal offence against or related to a child;
- behaved towards a child or children in a way that indicates he or she may pose a risk of harm to children; or
- behaved or may have behaved in a way that indicates they may not be suitable to work with children. *It is recognised that the 'harm' test for allegations against staff now includes a statement in regard to a person's conduct outside school, and need not include a child, for example, domestic abuse of a partner.*

Allegations should be reported to the LADO 'without delay'.

Before contacting the LADO, schools and colleges should conduct basic enquiries in line with local procedures to establish the facts to help them determine whether there is any foundation to the allegation, being careful not to jeopardise any future police investigation.

The LADO's role is not to investigate the allegation, but to ensure that an appropriate investigation is carried out, whether that is by the police, children's social care, the school or college, or a combination of these.

6.7 Low level concerns about staff behaviour

Concerns may be graded Low-level if the concern does not meet the criteria for an allegation; and the person has acted in a way that is inconsistent with the staff code of conduct, including inappropriate conduct outside of work. Example behaviours include, but are not limited to:

- being over friendly with children;
- having favourites;
- taking photographs of children on their mobile phone;
- engaging with a child on a one-to-one basis in a secluded area or behind a closed door; or,
- using inappropriate sexualised, intimidating or offensive language.

If the concern has been raised via a third party, the headteacher/principal should collect as much evidence as possible by speaking:

- directly to the person who raised the concern, unless it has been raised anonymously;
- to the individual involved and any witnesses.

Reports about supply staff and contractors should be notified to their employers, so any potential patterns of inappropriate behaviour can be identified.

Staff should be encouraged and feel confident to self-refer, where, for example, they have found themselves in a situation which could be misinterpreted, might appear compromising to others, and/or on reflection they believe they have behaved in such a way that they consider falls below the expected professional standards.

Low-level concerns should be recorded in writing, including:

- name* of individual sharing their concerns
- details of the concern
- context in which the concern arose
- action taken

(* if the individual wishes to remain anonymous then that should be respected as far as reasonably possible)

Records must be kept confidential, held securely and comply with the Data Protection Act 2018. Schools and colleges should decide how long they retain such information, but it is recommended that it is kept at least until the individual leaves their employment.

Records should be reviewed so that potential patterns of concerning, problematic or inappropriate behaviour can be identified.

If a concerning pattern of behaviour is identified and now meets the criteria for an allegation, then the matter should be referred to the LADO.

The records' review might identify that there are wider cultural issues within the school or college that enabled the behaviour to occur. This might mean that policies or processes could be revised or extra training delivered to minimise the risk of it happening again.

Where appropriate, the school will inform Ofsted of the allegation and actions taken, within the necessary timescale (see appendix 3 for more detail).

6.8 Allegations of abuse made against other pupils –child-on child abuse

We recognise that children are capable of abusing their peers. Abuse will never be tolerated or passed off as “banter”, “just having a laugh” or “part of growing up”. We recognise that even if there are no reported cases of child-on-child abuse, such abuse may still be taking place and is simply not being reported; staff need to be alert to behaviours that could be a symptom of abuse within the child’s peer group- such as not wanting to come to school, not wanting to be near other pupils.

We also recognise the gendered nature of child-on-child abuse (i.e. that it is more likely that girls will be victims and boys perpetrators). However, all child-on-child abuse is unacceptable and will be taken seriously.

There are different forms peer on peer abuse, such as:

- bullying (including cyberbullying, prejudice-based and discriminatory bullying);
- abuse in intimate personal relationships between peers;

- physical abuse which can include hitting, kicking, shaking, biting, hair pulling, or otherwise causing physical harm;
- sexual violence and sexual harassment.

Most cases of pupils hurting other pupils will be dealt with under our school's behaviour policy, but this child protection and safeguarding policy will apply to any allegations that raise safeguarding concerns. This might include where the alleged behaviour:

- Is serious, and potentially a criminal offence
- Could put pupils in the school at risk
- Is violent
- Involves pupils being forced to use drugs or alcohol
- Involves sexual exploitation, sexual abuse or sexual harassment, such as indecent exposure, sexual assault, or sexually inappropriate pictures or videos (including sharing nudes and semi-nudes)

If a pupil makes an allegation of abuse against another pupil:

- You must record the allegation and tell the DSL, but do not investigate it
- The DSL will contact the local authority children's social care team and follow its advice, as well as the police if the allegation involves a potential criminal offence
- The DSL will put a risk assessment and support plan into place for all children involved (including the victim(s), the child(ren) against whom the allegation has been made and any others affected) with a named person they can talk to if needed. Staff will be informed on a need to know basis.
- The DSL will allocate an Assistant Headteacher (deputy DSL) as a liaison contact for families of victim(s) and perpetrator(s)
- The DSL will contact the children and adolescent mental health services (CAMHS), if appropriate
- The DSL will follow the school's Sexual Violence or Harassment between Children Protocols, liaising closely with the Local Authority contextual safeguarding team.
- The pupils involved will be supported through a risk assessment and also allocation of Key Workers and SEMH team/counsellor to support in a personalised way.

We will minimise the risk of child-on-child abuse by:

- Challenging any form of derogatory or sexualised language or behaviour, including requesting or sending sexual images
- Being vigilant to issues that particularly affect different genders – for example, sexualised or aggressive touching or grabbing towards female pupils, and initiation or hazing type violence with respect to boys
- Ensuring our curriculum helps to educate pupils about appropriate behaviour and consent
- Ensuring pupils know they can talk to staff confidentially
- Ensuring staff are trained to understand that a pupil harming a peer could be a sign that the child is being abused themselves, and that this would fall under the scope of this policy

6.9-Sharing nudes and semi-nudes

If you are made aware of an incident involving sharing nudes and semi-nudes also known as 'youth produced sexual imagery'), you must report it to the DSL immediately. The school follows the guidance given to schools by the UK Council for Internet Safety (December 2020).

- Incident referred to DSL as soon as possible
- DSL holds initial review meeting with relevant staff
- Interviews with children involved (if appropriate)
- Parents/carers informed at an early stage (unless this puts the child/children at risk of harm)
- Referral made to children's social care and/or the police immediately if there is a concern that a child or young person has been harmed or is at risk of immediate harm at any point in the process (see later decision making)

You must **not**:

- View, download or share the imagery yourself, or ask a pupil to share or download it. If you have already viewed the imagery by accident, you must report this to the DSL
- Delete the imagery or ask the pupil to delete it
- Ask the pupil(s) who are involved in the incident to disclose information regarding the imagery (this is the DSL's responsibility)
- Share information about the incident with other members of staff, the pupil(s) it involves or their, or other, parents and/or carers
- Say or do anything to blame or shame any young people involved

You should explain that you need to report the incident, and reassure the pupil(s) that they will receive support and help from the DSL.

Initial review meeting

Following a report of an incident, the DSL will hold an initial review meeting with appropriate school staff. This meeting will consider the initial evidence and aim to determine:

- Whether there is an immediate risk to pupil(s)
- If a referral needs to be made to the police and/or children's social care
- If it is necessary to view the imagery in order to safeguard the young person (in most cases, imagery should not be viewed)
- What further information is required to decide on the best response
- Whether the imagery has been shared widely and via what services and/or platforms (this may be unknown)
- Whether immediate action should be taken to delete or remove images from devices or online services
- Any relevant facts about the pupils involved which would influence risk assessment
- If there is a need to contact another school, college, setting or individual
- Whether to contact parents or carers of the pupils involved (in most cases parents should be involved)

The DSL will make an immediate referral to police and/or children's social care if:

- The incident involves an adult
- There is reason to believe that a young person has been coerced, blackmailed or groomed, or if there are concerns about their capacity to consent (for example owing to special educational needs)
- What the DSL knows about the imagery suggests the content depicts sexual acts which are unusual for the young person's developmental stage, or are violent
- The imagery involves sexual acts and any pupil in the imagery is under 13
- The DSL has reason to believe a pupil is at immediate risk of harm owing to the sharing of the imagery (for example, the young person is presenting as suicidal or self-harming)

If none of the above apply then the DSL, in consultation with the headteacher and other members of staff as appropriate, may decide to respond to the incident without involving the police or children's social care.

Further review by the DSL

If at the initial review stage a decision has been made not to refer to police and/or children's social care, the DSL will conduct a further review.

They will hold interviews with the pupils involved (if appropriate) to establish the facts and assess the risks.

If at any point in the process there is a concern that a pupil has been harmed or is at risk of harm, a referral will be made to children's social care and/or the police immediately.

Informing parents

The DSL will inform parents at an early stage and keep them involved in the process, unless there is a good reason to believe that involving them would put the pupil at risk of harm.

Referring to the police

If it is necessary to refer an incident to the police, this will be done through local neighbourhood police.

Recording incidents

All sexting incidents and the decisions made in responding to them will be recorded. The record-keeping arrangements set out in section 12 of this policy also apply to recording incidents of sexting.

Curriculum coverage

Pupils are taught about the issues surrounding sexting as part of our PSHE education and computing programmes. Teaching covers the following in relation to sexting:

- What it is
- How it is most likely to be encountered
- The consequences of requesting, forwarding or providing such images, including when it is and is not abusive
- Issues of legality
- The risk of damage to people's feelings and reputation

Pupils also learn the strategies and skills needed to manage:

- Specific requests or pressure to provide (or forward) such images
- The receipt of such images

This policy on sexting is also shared with pupils so they are aware of the processes the school will follow in the event of an incident.

7. Notifying parents

Where appropriate, we will discuss any concerns about a child with the child's parents. The DSL will normally do this in the event of a suspicion or disclosure.

Other staff will only talk to parents about any such concerns following consultation with the DSL.

If we believe that notifying the parents would increase the risk to the child, we will discuss this with the local authority children's social care team before doing so.

In the case of allegations of abuse made against other children, we will normally notify the parents of all the children involved.

8. Pupils with special educational needs and disabilities

We recognise that pupils with special educational needs and disabilities (SEND) or certain health conditions can face additional safeguarding challenges. Additional barriers can exist when recognising abuse and neglect in this group, including:

- Assumptions that indicators of possible abuse such as behaviour, mood and injury relate to the child's disability without further exploration
- These children being more prone to peer group isolation or bullying (including prejudice-based bullying) than other children;
- The potential for pupils with SEND or certain medical conditions being disproportionately impacted by behaviours such as bullying, without outwardly showing any signs

- Communication barriers and difficulties managing or reporting these challenges

All of our pupils have special educational needs caused by their physical, medical and learning difficulties. Some of them are non-speech communicators. As such, we recognise that they are highly vulnerable, and that their parents and carers may be highly anxious on their behalf. It is the duty of staff at JCS to take extra care to try to correctly interpret apparent signs of abuse or neglect. Indications of abuse will be reported as for other pupils.

The school is aware that any child who is being abused in any way may have feelings such as guilt, anger or lack of self-worth. Everything we do in JCS aims to help all children to have confidence, motivation and independence, and to feel safe, happy and as free from anxiety as we can possibly manage. We do this through:

- explicitly teaching safeguarding as a distinct subject throughout the school and within cross-curricular and subject lessons;
- the positive ethos of the school;
- developing pupils' sense of themselves and their self-esteem through specifically designed sessions as well as PSHE and whole school rewards;
- promoting SMSC through visits, visitors and experiences;
- promoting British Values and tolerance;
- developing their communication skills, including updating pupils' communication aids with appropriate and necessary language;
- developing strategies for danger-awareness and self-protection where possible, including access to and the use of the internet and modern communication tools
- when pupils use the school's network to access the internet, they are protected from inappropriate content by our robust filtering system through LGFL, Home protect and School Protect. The school is aware of the need for consistent monitoring of pupil access. Staff are vigilant and nominated contacts generate a weekly Webscreen Report to monitor the use of ICT across the school. (see Online Policy for full details). However, many pupils are able to access the internet using their own data plan. To minimise inappropriate use, as a school we do not allow pupils to have mobile phones out on the school premises unless as part of an intensely supervised lesson.
- developing a sense of boundaries between appropriate and inappropriate behaviours, both their own and those of others;(see Relationship and Sex Education policy)
- developing tolerant, caring and non-abusive behaviour between pupils within the classroom and at non-curriculum times such as lunch and playtime in regard to British Values;
- classroom strategies (see Teaching and Learning Policy);
- the curriculum, including PSHE;
- consistency of approach from well-trained staff;
- encouragement of acceptable behaviours within a whole school positive behaviour approach and individual approaches through bespoke behaviour programmes (see Positive Behaviour Policy);
- close liaison with other agencies such as social services, CAMHS, EPS;
- close liaison with the SAFE workers (pastoral team) at ARA
- access via request (pupil, parent or staff) to a trained counsellor at the school
- close communication systems with parents and carers;
- ensuring that all CP register records follow a child when that child moves to another school.
- close liaison with health partners to ensure care plans are communicated effectively to school staff.

8.1 Mental health and links to safeguarding and child protection

All staff at JCS are aware that mental health problems can, in some cases, be an indicator that a child has suffered or is at risk of suffering abuse, neglect or exploitation.

School staff are not expected or trained to diagnose mental health conditions or issues, but may notice behaviours that may be of concern.

If staff have a mental health concern about a child that is also a safeguarding concern, immediate action should be taken by speaking to the designated safeguarding lead or a deputy through My Concern or by talking to the DSL if a high alert. The Senior Mental Health Leads at JCS are Aidan Meech and Marlena Dalton who can be contacted through the school office.

8.2 Pupils with allocated social workers

At JCS we recognise that when a child has a social worker, it is an indicator that the child is more at risk than most pupils.

This may mean that they are more vulnerable to further harm, as well as facing educational barriers to attendance, learning, behaviour and poor mental health.

We take these needs into account when making plans to support pupils who have a social worker. For example:

- the Family Worker holds a list of pupils with social workers and liaises regularly with the administration team regarding attendance
- regular meetings with phase leaders and teams to review pupils with allocated social workers
- curriculum and progress meetings always discuss pupils with social workers

8.3 Children who are lesbian, gay, bi or trans (LGBT)

The fact that a child or a young person may be LGBT is not in itself an inherent risk factor for harm. However, children who are LGBT can be targeted by other children. In some cases, a child who is perceived by other children to be LGBT (whether or not) can be just as vulnerable as children who identify as LGBT.

Risks can be compounded where children who are LGBT lack a trusted adult with whom they can be open. At JCS we endeavour to reduce the additional barriers faced by providing a safe space for them to speak to by sharing staff accounts, including LGBT relationships in the curriculum for RSE and inviting in visitors such as Diversity Role Models.

9. Online safety

The school has a clear policy on the use of mobile and smart technology that reflects the fact many children have unlimited and unrestricted access to the internet

The school recognises the fact many children have unlimited and unrestricted access to the internet via mobile phone networks (i.e. 3G, 4G and 5G). This access means some children, sexually harass their peers via their mobile and smart technology, share indecent images: consensually and non-consensually (often via large chat groups), and view and share pornography and other harmful content.

The breadth of issues classified within online safety is considerable and ever evolving, but can be categorised into four areas of risk:

- content: being exposed to illegal, inappropriate, or harmful content, for example: pornography, fake news, racism, misogyny, self-harm, suicide, anti-Semitism, radicalisation, and extremism.
- contact: being subjected to harmful online interaction with other users; for example: peer to peer pressure, commercial advertising and adults posing as children or young adults with the intention to groom or exploit them for sexual, criminal, financial or other purposes.
- conduct: online behaviour that increases the likelihood of, or causes, harm; for example, making, sending and receiving explicit images (e.g. consensual and nonconsensual sharing of nudes and semi-nudes and/or pornography, sharing other explicit images and online bullying, and
- commerce: - risks such as online gambling, inappropriate advertising, phishing and or financial scams. If you feel your pupils, students or staff are at risk, please report it to the Anti-Phishing Working Group (<https://apwg.org/>)

At JCS we manage this risk by:

- Having clear agreements about the use of mobile phones and other technologies in school for pupils and staff

- When children use the school's network to access the internet, they are protected from inappropriate content by our filtering and monitoring systems, which are regularly reviewed for their effectiveness

FILTERING AND MONITORING (see Online Safety Policy for full details):

Is included:

- in the DSL's role;
- in staff training twice a year, including cyber security
- any risk management plans for vulnerable children;
- Filtering refers to the technology preventing access to harmful or inappropriate content. At JCS we use LGFL, Home Protect and School Protect
- Monitoring refers to the practical steps staff take to ensure harmful or inappropriate access is not made. Monitoring can include
 - Physical monitoring by staff in the class
 - Guided Access tool on iPads to prevent pupils moving away from the set activity
 - Monitoring user logs weekly
 - Monitoring individual devices when a concern is raised
- We make sure that any school devices used away from the school site are also subject to filtering and monitoring procedures.
- Each year (at least) our designated safeguarding lead, along with our IT team and a governor, review our filtering and monitoring procedures to ensure that they effectively prevent access to harmful or inappropriate content. They also ensure that the systems we have in place to report any difficulties with the system are understood by all staff and reports are effectively managed.
- All our staff undertake training to understand the risks of poor filtering and monitoring, and know how to share their concerns
- All our staff have taken part in annual cybersecurity training

Regarding the use of social media and the internet when at home the school:

- Informs pupils through robust e-safety lessons
- Holds information evenings for parents/carers and families
- Sends regular updates home to inform
- Uses chat sessions to understand what children are accessing and supporting children who make disclosures

The school carries out an annual review of our approach to online safety, supported by an annual risk assessment

WHEN FILTERING OR MONITORING RAISES A CONCERN

- Concerns regarding staff will be addressed by the Headteacher with advice from HR and, where necessary, the LADO. Depending on the severity of the concern it could be managed through safeguarding, disciplinary or low-level procedures
- Concerns regarding pupils will be logged onto My Concern and then managed by the appropriate staff members depending on the severity of the concern. Parents and other agencies are alerted as necessary.

Mobile phones and cameras

Staff are allowed to bring their personal phones to school for their own use, but will limit such use to non-contact time when pupils are not present. Staff members' personal phones will remain in their bags or cupboards during contact time with pupils.

Staff will not take pictures or recordings of pupils on their personal phones or cameras.

We will follow the General Data Protection Regulation and Data Protection Act 2018 when taking and storing photos and recordings for use in the school. The school's e-safety policy gives guidelines and a declaration for staff on the use of mobile phones.

10. Complaints and concerns about school safeguarding policies

10.1 Complaints against staff

Complaints against staff that are likely to require a child protection investigation will be handled in accordance with our procedures for dealing with allegations of abuse made against staff (see appendix 3).

10.2 Other complaints

Safeguarding complaints are taken very seriously and investigated immediately. A confidential log of concerns is held by the DSLs and scrutinised when a new concern is raised to discover patterns or repeated instances. After investigating, actions to change practice will be put into place where necessary and staff, governors and parents/carers informed.

10.3 Whistle-blowing

Where there are concerns about the way that safeguarding is carried out in the school, staff should refer to the school's comprehensive Whistle-blowing Policy held by Ealing Local Authority.

A whistleblowing disclosure must be about something that affects the general public such as:

- a criminal offence has been committed, is being committed or is likely to be committed
- a legal obligation has been breached
- there has been a miscarriage of justice
- the health or safety of any individual has been endangered
- the environment has been damaged
- information about any of the above has been concealed.

The NSPCC runs a whistleblowing helpline on behalf of the government, the number is 0808 800 5000.

10.4 Out of school providers

The school hosts out-of-school providers on the premises, and ensures that the provider meets the guidance in 'Keeping Children Safe during community activities, after-school clubs and tuition' (DfE, 2020).

JCS follows its own safeguarding and child protection procedures if we have concerns about the out-of-school provider. This may include contacting the local authority designated officer in the case of concerns about adults.

11. Record-keeping

We will hold records in line with our records retention schedule.

All safeguarding concerns, discussions, decisions made and the reasons for those decisions, must be recorded in writing. If you are in any doubt about whether to record something, discuss it with the DSL. All verbal conversations will be promptly recorded in writing.

Non-confidential records will be easily accessible and available. Confidential information and records will be held securely and only available to those who have a right or professional need to see them.

Safeguarding records relating to individual children will be retained for a reasonable period of time after they have left the school.

If a child for whom the school has, or has had, safeguarding concerns moves to another school, the DSL will ensure that their child protection file is forwarded promptly and securely, and separately from the main pupil file. In addition, if the concerns are significant or complex, and/or social services are involved, the DSL will speak to the DSL of the receiving school and provide information to enable them to have time to make any necessary preparations to ensure the safety of the child.

The school has moved to an electronic system of record keeping: My Concern. Staff record a concern on the system which automatically alerts the DSL. Urgent concerns are also immediately reported verbally to the DSL.

Paper records are kept in a locked filing cabinet in the Headteacher's office. The log of incidents is password protected and known only by the DSLs.

In addition:

- Appendix 2 sets out our policy on record-keeping specifically with respect to recruitment and pre-employment checks
- Appendix 3 sets out our policy on record-keeping with respect to allegations of abuse made against staff

12. Training

12.1 All staff

All staff members will undertake safeguarding and child protection training at induction, to ensure they understand the school's safeguarding systems and their responsibilities, and can identify signs of possible abuse or neglect; including:

- the child protection policy;
- the behaviour policy;
- filtering and monitoring;
- cyber security;
- the staff behaviour policy (sometimes called a code of conduct);
- the safeguarding response to children who are absent from education; and
- the role of the designated safeguarding lead, including the identity of the designated safeguarding lead and any deputies.

This training will be regularly updated and will be in line with advice from the 3 safeguarding partners, at least annually.

All staff will have training on the government's anti-radicalisation strategy, Prevent, to enable them to identify children at risk of being drawn into terrorism and to challenge extremist ideas.

Staff will also receive regular safeguarding and child protection updates (for example, through emails, e-bulletins and staff meetings) as required, but at least annually.

Contractors who are provided through a private finance initiative (PFI) or similar contract will also receive safeguarding training.

Volunteers will receive appropriate training, if applicable.

Members of the Governing Board of the school take part in mandatory safeguarding training to ensure that they can 'assure themselves that the safeguarding policies and procedures in place in schools and colleges are effective.' This training is regularly updated.

Safer recruitment training is available to all relevant staff and governors that are involved in the recruitment process.

12.2 The DSL and Deputy DSLs

The DSL and deputies will undertake child protection and safeguarding training at least every 2 years.

In addition, they will update their knowledge and skills at regular intervals and at least annually (for example, through e-bulletins, meeting other DSLs, or taking time to read and digest safeguarding developments).

They will also undertake Prevent awareness training.

12.3 Governors

All governors receive training about safeguarding, to make sure they have the knowledge and information needed to perform their functions and understand their responsibilities.

As the chair of governors may be required to act as the ‘case manager’ in the event that an allegation of abuse is made against the headteacher, they receive training in managing allegations for this purpose.

12.4 Recruitment – interview panels

At least one person conducting any interview for a post at the school will have undertaken safer recruitment training. This will cover, as a minimum, the contents of the Department for Education’s statutory guidance, Keeping Children Safe in Education, and will be in line with local safeguarding procedures.

When appointing staff, Governors and staff will take account of the guidance issued nationally and by the borough, with particular reference to safer recruitment. The Headteacher, SBM, Deputy Designated Leads and key Governors have also undertaken safer recruitment training to ensure that all safeguarding procedures are adhered to. In carrying out the recruitments and appointment of staff, the school will undertake to observe the following safeguards:

- That documentation sent out to potential candidates will make it clear that CP is a high priority of the school and that rigorous checks will be made of any candidate before appointments are confirmed.
- That all references will be taken up and verified
- That a reference will always be obtained from the last employer
- That at interview, candidates will be asked to account for any gaps in their career/employment history and whether they have spent time out of the country
- That candidates will be made aware that all staff are subject to a full Enhanced Disclosure Barring Service check
- That evidence of relevant checks will be recorded in a single, central location that is secure but easily accessible when appropriate and necessary.

12.5 Staff who have contact with pupils and families

All staff who have contact with children and families will have supervisions which will provide them with support, coaching and training, promote the interests of children and allow for confidential discussions of sensitive issues.

13. Monitoring arrangements

This policy will be reviewed **annually** by the Headteacher. At every review, it will be approved by the full Governing Board.

14. Links with other policies

This policy links to the following policies and procedures:

- Positive Behaviour policy
- Positive Handling policy
- Written Statement of Behaviour Principles
- Sexual Violence or Harassment between Children Protocols
- Intimate Care policy
- Health and safety policy
- Anti-bullying policy
- e Safety policy
- e Safety acceptable use agreement
- Personal mobile devices agreement
- Social Media policy
- Teaching and learning policy
- Code of conduct for staff

- Relationships and sex policy
- Attendance policy
- Non-collection of pupils process
- Equality duty
- Complaints policy
- Curriculum policy
- Remote Learning policy
- Privacy notices
- Declaration of staff and the acceptable use processes

The school has also adopted the following Ealing Council guidance and procedures:

- Procedures for schools responding to allegations of abuse against teachers and other school staff
- Harassment and bullying guidelines
- Code of conduct for school employees
- Full recruitment and selection guidance
- Corporate health and safety policy
- Guidelines on the use of control and physical restraint by staff
- Guidance and procedures for school visits

These appendices are based on the Department for Education’s statutory guidance, Keeping Children Safe in Education.

Appendix 1: Abuse and neglect

Knowing what to look for is vital to the early identification of abuse and neglect. All staff should be aware of indicators of abuse and neglect so that they are able to identify cases of children who may be in need of help or protection. If staff are unsure, they should always speak to the designated safeguarding lead (or deputy). All school staff should be aware that abuse, neglect and safeguarding issues are rarely stand-alone events that can be covered by one definition or label. In most cases, multiple issues will overlap with one another. All staff should be aware that safeguarding incidents and/or behaviours can be associated with factors outside the school and/or can occur between children outside of these environments. All staff, but especially the designated safeguarding lead (and deputies) should consider whether children are at risk of abuse or exploitation in situations outside their families. Extra-familial harms take a variety of different forms and children can be vulnerable to multiple harms including (but not limited to) sexual exploitation, criminal exploitation, and serious youth violence.

All staff should be aware that child sexual and child criminal exploitation are forms of child abuse.

Indicators of abuse and neglect

Abuse: a form of maltreatment of a child. Somebody may abuse or neglect a child by inflicting harm or by failing to act to prevent harm. Children may be abused in a family or in an institutional or community setting by those known to them or, more rarely, by others.

Abuse can take place wholly online, or technology may be used to facilitate offline abuse. Children may be abused by an adult or adults or by another child or children.

Physical abuse: a form of abuse which may involve hitting, shaking, throwing, poisoning, burning or scalding, drowning, suffocating or otherwise causing physical harm to a child.

Physical harm may also be caused when a parent or carer fabricates the symptoms of, or deliberately induces, illness in a child.

Emotional abuse: the persistent emotional maltreatment of a child such as to cause severe and adverse effects on the child’s emotional development.

It may involve conveying to a child that they are worthless or unloved, inadequate, or valued only insofar as they meet the needs of another person.

It may include not giving the child opportunities to express their views, deliberately silencing them or 'making fun' of what they say or how they communicate.

It may feature age or developmentally inappropriate expectations being imposed on children. These may include interactions that are beyond a child's developmental capability as well as overprotection and limitation of exploration and learning, or preventing the child from participating in normal social interaction.

It may involve seeing or hearing the ill-treatment of another.

It may involve serious bullying (including cyberbullying), causing children frequently to feel frightened or in danger, or the exploitation or corruption of children.

Some level of emotional abuse is involved in all types of maltreatment of a child, although it may occur alone.

Sexual abuse: involves forcing or enticing a child or young person to take part in sexual activities, not necessarily involving a high level of violence, whether or not the child is aware of what is happening.

The activities may involve physical contact, including assault by penetration (for example rape or oral sex) or non-penetrative acts such as masturbation, kissing, rubbing and touching outside of clothing.

They may also include non-contact activities, such as involving children in looking at, or in the production of, sexual images, watching sexual activities, encouraging children to behave in sexually inappropriate ways, or grooming a child in preparation for abuse.

Sexual abuse can take place online, and technology can be used to facilitate offline abuse.

Sexual abuse is not solely perpetrated by adult males. Women can also commit acts of sexual abuse, as can other children. The sexual abuse of children by other children is a specific safeguarding issue in education

Neglect: the persistent failure to meet a child's basic physical and/or psychological needs, likely to result in the serious impairment of the child's health or development.

Neglect may occur during pregnancy, for example, as a result of maternal substance abuse.

Once a child is born, neglect may involve a parent or carer failing to: provide adequate food, clothing and shelter (including exclusion from home or abandonment); protect a child from physical and emotional harm or danger; ensure adequate supervision (including the use of inadequate care-givers); or ensure access to appropriate medical care or treatment.

It may also include neglect of, or unresponsiveness to, a child's basic emotional needs.

All staff should be aware that child sexual and child criminal exploitation are forms of child abuse.

Appendix 2: Safer recruitment and DBS checks – policy and procedures

We will record all information on the checks carried out in the school's single central record (SCR). Copies of these checks, where appropriate, will be held in individuals' personnel files. We follow requirements and best practice in retaining copies of these checks, as set out below.

New staff

When appointing new staff, we will:

- Verify their identity

- Obtain (via the applicant) an enhanced Disclosure and Barring Service (DBS) certificate, including barred list information for those who will be engaging in regulated activity (see definition below). We will not keep a copy of this for longer than 6 months
- Obtain a separate barred list check if they will start work in regulated activity before the DBS certificate is available
- Verify their mental and physical fitness to carry out their work responsibilities
- Verify their right to work in the UK. We will keep a copy of this verification for the duration of the member of staff's employment and for 2 years afterwards
- Verify their professional qualifications, as appropriate
- Ensure they are not subject to a prohibition order if they are employed to be a teacher
- Carry out further additional checks, as appropriate, on candidates who have lived or worked outside of the UK, including (where relevant) any teacher sanctions or restrictions imposed by a European Economic Area professional regulating authority, and criminal records checks or their equivalent

We will ensure that appropriate checks are carried out to ensure that individuals are not disqualified under the 2018 Childcare Disqualification Regulations and Childcare Act 2006. Where we take a decision that an individual falls outside of the scope of these regulations and we do not carry out such checks, we will retain a record of our assessment on the individual's personnel file. This will include our evaluation of any risks and control measures put in place, and any advice sought.

We will ask for written information about previous employment history and check that information is not contradictory or incomplete.

We will seek references on all short-listed candidates, including internal candidates, before interview. We will scrutinise these and resolve any concerns before confirming appointments. The references requested will ask specific questions about the suitability of the applicant to work with children.

In addition, as part of the shortlisting process the school will consider carrying out an online search as part of their due diligence on the shortlisted candidates. This may help identify any incidents or issues that have happened, and are publicly available online, which the school may want to explore with the applicant at interview

Regulated activity means a person who will be:

- Responsible, on a regular basis in a school or college, for teaching, training, instructing, caring for or supervising children; or
- Carrying out paid, or unsupervised unpaid, work regularly in a school or college where that work provides an opportunity for contact with children; or
- Engaging in intimate or personal care or overnight activity, even if this happens only once and regardless of whether they are supervised or not

Existing staff

If we have concerns about an existing member of staff's suitability to work with children, we will carry out all the relevant checks as if the individual was a new member of staff. We will also do this if an individual moves from a post that is not regulated activity to one that is.

We will refer to the DBS anyone who has harmed, or poses a risk of harm, to a child or vulnerable adult where:

- We believe the individual has engaged in relevant conduct; or
- The individual has received a caution or conviction for a relevant offence, or there is reason to believe the individual has committed a listed relevant offence, under the Safeguarding Vulnerable Groups Act 2006 (Prescribed Criteria and Miscellaneous Provisions) Regulations 2009; or

- The ‘harm test’ is satisfied in respect of the individual (i.e. they may harm a child or vulnerable adult or put them at risk of harm); and
- The individual has been removed from working in regulated activity (paid or unpaid) or would have been removed if they had not left

Agency and third-party staff

We will obtain written notification from any agency or third-party organisation that it has carried out the necessary safer recruitment checks that we would otherwise perform. We will also check that the person presenting themselves for work is the same person on whom the checks have been made.

Contractors

We will ensure that any contractor, or any employee of the contractor, who is to work at the school has had the appropriate level of DBS check (this includes contractors who are provided through a PFI or similar contract). This will be:

- An enhanced DBS check with barred list information for contractors engaging in regulated activity
- An enhanced DBS check, not including barred list information, for all other contractors who are not in regulated activity but whose work provides them with an opportunity for regular contact with children

We will obtain the DBS check for self-employed contractors.

We will not keep copies of such checks for longer than 6 months.

Contractors who have not had any checks will not be allowed to work unsupervised or engage in regulated activity under any circumstances.

We will check the identity of all contractors and their staff on arrival at the school.

For self-employed contractors such as music teachers or sports coaches, we will ensure that appropriate checks are carried out to ensure that individuals are not disqualified under the 2018 Childcare Disqualification Regulations and Childcare Act 2006. Where we decide that an individual falls outside of the scope of these regulations and we do not carry out such checks, we will retain a record of our assessment. This will include our evaluation of any risks and control measures put in place, and any advice sought.

Trainee/student teachers

Where applicants for initial teacher training are salaried by us, we will ensure that all necessary checks are carried out.

Where trainee teachers are fee-funded, we will obtain written confirmation from the training provider that necessary checks have been carried out and that the trainee has been judged by the provider to be suitable to work with children.

In both cases, this includes checks to ensure that individuals are not disqualified under the 2018 Childcare Disqualification Regulations and Childcare Act 2006.

Volunteers

We will:

- Never leave an unchecked volunteer unsupervised or allow them to work in regulated activity
- Obtain an enhanced DBS check with barred list information for all volunteers who are new to working in regulated activity
- Carry out a risk assessment when deciding whether to seek an enhanced DBS check without barred list information for any volunteers not engaging in regulated activity. We will retain a record of this risk assessment
- Ensure that appropriate checks are carried out to ensure that individuals are not disqualified under the 2018 Childcare Disqualification Regulations and Childcare Act 2006. Where we decide that an

individual falls outside of the scope of these regulations and we do not carry out such checks, we will retain a record of our assessment. This will include our evaluation of any risks and control measures put in place, and any advice sought

Governors

All governors will have an enhanced DBS check without barred list information.

They will have an enhanced DBS check with barred list information if working in regulated activity.

All governors will also have a section 128 check (as a section 128 direction disqualifies an individual from being a maintained school governor).

Appendix 3: Allegations of abuse made against staff

This section of this policy applies to all cases in which it is alleged that a current member of staff or volunteer has:

- Behaved in a way that has harmed a child, or may have harmed a child, or
- Possibly committed a criminal offence against or related to a child, or
- Behaved towards a child or children in a way that indicates he or she would pose a risk of harm to children

It applies regardless of whether the alleged abuse took place in the school. Allegations against a teacher who is no longer teaching and historical allegations of abuse will be referred to the police.

We will deal with any allegation of abuse against a member of staff or volunteer very quickly, in a fair and consistent way that provides effective child protection while also supporting the individual who is the subject of the allegation.

Our procedures for dealing with allegations will be applied with common sense and judgement.

Suspension

Suspension will not be the default position, and will only be considered in cases where there is reason to suspect that a child or other children is/are at risk of harm, or the case is so serious that it might be grounds for dismissal. In such cases, we will only suspend an individual if we have considered all other options available and there is no reasonable alternative.

Based on an assessment of risk, we will consider alternatives such as:

- Redeployment within the school so that the individual does not have direct contact with the child or children concerned
- Providing an assistant to be present when the individual has contact with children
- Redeploying the individual to alternative work in the school so that they do not have unsupervised access to children
- Moving the child or children to classes where they will not come into contact with the individual, making it clear that this is not a punishment and parents have been consulted
- Temporarily redeploying the individual to another role in a different location, for example to an alternative school or other work for the Local Authority.

Definitions for outcomes of allegation investigations

- **Substantiated:** there is sufficient evidence to prove the allegation
- **Malicious:** there is sufficient evidence to disprove the allegation and there has been a deliberate act to deceive
- **False:** there is sufficient evidence to disprove the allegation

- **Unsubstantiated:** there is insufficient evidence to either prove or disprove the allegation (this does not imply guilt or innocence)
- **Unfounded:** to reflect cases where there is no evidence or proper basis which supports the allegation being made

Procedure for dealing with allegations

In the event of an allegation that meets the criteria above, the headteacher (or chair of governors where the Headteacher is the subject of the allegation) – the ‘case manager’ – will take the following steps:

- Immediately discuss the allegation with the designated officer at the local authority. This is to consider the nature, content and context of the allegation and agree a course of action, including whether further enquiries are necessary to enable a decision on how to proceed, and whether it is necessary to involve the police and/or children’s social care services. (The case manager may, on occasion, consider it necessary to involve the police *before* consulting the designated officer – for example, if the accused individual is deemed to be an immediate risk to children or there is evidence of a possible criminal offence. In such cases, the case manager will notify the designated officer as soon as practicably possible after contacting the police)
- Inform the accused individual of the concerns or allegations and likely course of action as soon as possible after speaking to the designated officer (and the police or children’s social care services, where necessary). Where the police and/or children’s social care services are involved, the case manager will only share such information with the individual as has been agreed with those agencies
- Where appropriate (in the circumstances described above), carefully consider whether suspension of the individual from contact with children at the school is justified or whether alternative arrangements such as those outlined above can be put in place. Advice will be sought from the designated officer, police and/or children’s social care services, as appropriate
- **If immediate suspension is considered necessary**, agree and record the rationale for this with the designated officer. The record will include information about the alternatives to suspension that have been considered, and why they were rejected. Written confirmation of the suspension will be provided to the individual facing the allegation or concern within 1 working day, and the individual will be given a named contact at the school and their contact details
- **If it is decided that no further action is to be taken** in regard to the subject of the allegation or concern, record this decision and the justification for it and agree with the designated officer what information should be put in writing to the individual and by whom, as well as what action should follow both in respect of the individual and those who made the initial allegation
- **If it is decided that further action is needed**, take steps as agreed with the designated officer to initiate the appropriate action in school and/or liaise with the police and/or children’s social care services as appropriate
- Provide effective support for the individual facing the allegation or concern, including appointing a named representative to keep them informed of the progress of the case and considering what other support is appropriate. There are trade union representatives in school, and a confidential counselling service for staff.
- Inform the parents or carers of the child/children involved about the allegation as soon as possible if they do not already know (following agreement with children’s social care services and/or the police, if applicable). The case manager will also inform the parents or carers of the requirement to maintain confidentiality about any allegations made against teachers (where this applies) while investigations are ongoing. Any parent or carer who wishes to have the confidentiality restrictions removed in respect of a teacher will be advised to seek legal advice
- Keep the parents or carers of the child/children involved informed of the progress of the case and the outcome, where there is not a criminal prosecution, including the outcome of any disciplinary process (in confidence)
- Make a referral to the DBS where it is thought that the individual facing the allegation or concern has engaged in conduct that harmed or is likely to harm a child, or if the individual otherwise poses a risk of harm to a child

If the school is made aware that the secretary of state has made an interim prohibition order in respect of an individual, we will immediately suspend that individual from teaching, pending the findings of the investigation by the Teaching Regulation Agency.

Where the police are involved, wherever possible the Local Authority will ask the police at the start of the investigation to obtain consent from the individuals involved to share their statements and evidence for use in the school's disciplinary process, should this be required at a later point.

Timescales

- Any cases where it is clear immediately that the allegation is unsubstantiated or malicious will be resolved within 1 week
- If the nature of an allegation does not require formal disciplinary action, we will institute appropriate action within 3 working days
- If a disciplinary hearing is required and can be held without further investigation, we will hold this within 15 working days

Specific actions

Action following a criminal investigation or prosecution

The case manager will discuss with the local authority's designated officer whether any further action, including disciplinary action, is appropriate and, if so, how to proceed, taking into account information provided by the police and/or children's social care services.

Conclusion of a case where the allegation is substantiated

If the allegation is substantiated and the individual is dismissed or the school ceases to use their services, or the individual resigns or otherwise ceases to provide their services, the case manager and the school's personnel adviser will discuss with the designated officer whether to make a referral to the DBS for consideration of whether inclusion on the barred lists is required.

If the individual concerned is a member of teaching staff, the case manager and personnel adviser will discuss with the designated officer whether to refer the matter to the Teaching Regulation Agency to consider prohibiting the individual from teaching.

Individuals returning to work after suspension

If it is decided on the conclusion of a case that an individual who has been suspended can return to work, the case manager will consider how best to facilitate this.

The case manager will also consider how best to manage the individual's contact with the child or children who made the allegation, if they are still attending the school.

Unsubstantiated or malicious allegations

If an allegation is shown to be deliberately invented, or malicious, the headteacher, or other appropriate person in the case of an allegation against the headteacher, will consider whether any disciplinary action is appropriate against the pupil(s) who made it, or whether the police should be asked to consider whether action against those who made the allegation might be appropriate, even if they are not a pupil.

Confidentiality

The school will make every effort to maintain confidentiality and guard against unwanted publicity while an allegation is being investigated or considered.

The case manager will take advice from the local authority's designated officer, police and children's social care services, as appropriate, to agree:

- Who needs to know about the allegation and what information can be shared
- How to manage speculation, leaks and gossip, including how to make parents or carers of a child/children involved aware of their obligations with respect to confidentiality
- What, if any, information can be reasonably given to the wider community to reduce speculation
- How to manage press interest if, and when, it arises

Record-keeping

The case manager will maintain clear records about any case where the allegation or concern meets the criteria above and store them on the individual's confidential personnel file for the duration of the case. Such records will include:

- A clear and comprehensive summary of the allegation
- Details of how the allegation was followed up and resolved
- Notes of any action taken and decisions reached (and justification for these, as stated above)

If an allegation or concern is not found to have been malicious, the school will retain the records of the case on the individual's confidential personnel file, and provide a copy to the individual.

Where records contain information about allegations of sexual abuse, we will preserve these for the Independent Inquiry into Child Sexual Abuse (IICSA), for the term of the inquiry. We will retain all other records at least until the individual has reached normal pension age, or for 10 years from the date of the allegation if that is longer.

The records of any allegation that is found to be malicious will be deleted from the individual's personnel file.

References

When providing employer references, we will not refer to any allegation that has been proven to be false, unsubstantiated or malicious, or any history of allegations where all such allegations have been proven to be false, unsubstantiated or malicious.

Learning lessons

After any cases where the allegations are *substantiated*, we will review the circumstances of the case with the local authority's designated officer to determine whether there are any improvements that we can make to the school's procedures or practice to help prevent similar events in the future.

This will include consideration of (as applicable):

- Issues arising from the decision to suspend the member of staff
- The duration of the suspension
- Whether or not the suspension was justified
- The use of suspension when the individual is subsequently reinstated. We will consider how future investigations of a similar nature could be carried out without suspending the individual

Appendix 4: specific safeguarding issues

Children who are absent from school

The school has a robust attendance policy where absence is monitored closely by the administration team, Family Worker and DSL. The Attendance policy should be read for details.

CHILDREN WHO ARE MISSING FROM EDUCATION where the absence is extended and families are hard to reach are a particular safeguarding concern.

A child going missing from education, particularly repeatedly, can be a warning sign of a range of safeguarding issues. This might include abuse or neglect, such as sexual abuse or exploitation or child criminal exploitation, or issues such as mental health problems, substance abuse, radicalisation, FGM or forced marriage.

There are many circumstances where a child may become missing from education, but some children are particularly at risk. These include children who:

- Are at risk of harm or neglect
- Are at risk of forced marriage or FGM
- Come from Gypsy, Roma, or Traveller families
- Come from the families of service personnel
- Go missing or run away from home or care
- Are supervised by the youth justice system
- Cease to attend a school
- Come from new migrant families

Knowing where children are during school hours is an extremely important aspect of Safeguarding. Missing school can be an indicator of abuse and neglect and may also raise concerns about other safeguarding issues, including the criminal exploitation of children.

We monitor attendance carefully and address poor or irregular attendance without delay.

We will always follow up with parents/carers when pupils are not at school. This means we need to have a least two up to date contacts numbers for parents/carers. Parents should remember to update the school as soon as possible if the numbers change.

In response to the guidance in Keeping Children Safe in Education (2023) the school has:

1. Staff who understand what to do when children do not attend regularly
2. Appropriate policies, procedures and responses for pupils who go missing from education (especially on repeat occasions).
3. Staff who know the signs and triggers for travelling to conflict zones, FGM and forced marriage.
4. Procedures to inform the local authority when we wish to take pupils off-roll when they:
 - a. leave school to be home educated
 - b. move away from the school's location
 - c. remain medically unfit beyond compulsory school age
 - d. are in custody for four months or more (and will not return to school afterwards); or
 - e. are permanently excluded

We will ensure that pupils who are expected to attend the school, but fail to take up the place will be referred to the local authority.

When a pupil leaves the school, we will record the name of the pupil's new school and their expected start date.

Child sexual exploitation

Child sexual exploitation (CSE) is a form of child sexual abuse that occurs where an individual or group takes advantage of an imbalance of power to coerce, manipulate or deceive a child or young person under the age of 18 into sexual activity (a) in exchange for something the victim needs or wants, and/or (b) for the financial advantage or increased status of the perpetrator or facilitator. The victim may have been sexually exploited even if the sexual activity appears consensual.

Child sexual exploitation does not always involve physical contact; it can also occur through the use of technology.

Indicators of child sexual exploitation may include:

- Acquisition of money, clothes, mobile phones, etc. without plausible explanation;

- Gang-association and/or isolation from peers/social networks;
- Exclusion or unexplained absences from school, college or work;
- Leaving home/care without explanation and persistently going missing or returning late;
- Excessive receipt of texts/phone calls;
- Returning home under the influence of drugs/alcohol;
- Inappropriate sexualised behaviour for age/sexually transmitted infections;
- Evidence of/suspicions of physical or sexual assault;
- Relationships with controlling or significantly older individuals or groups;
- Multiple callers (unknown adults or peers);
- Frequenting areas known for sex work;
- Concerning use of internet or other social media;
- Increasing secretiveness around behaviours; and
- Self-harm or significant changes in emotional well-being.

Potential vulnerabilities include:

Although the following vulnerabilities increase the risk of child sexual exploitation, it must be remembered that not all children with these indicators will be exploited. Child sexual exploitation can occur without any of these issues.

- Having a prior experience of neglect, physical and/or sexual abuse;
- Lack of a safe/stable home environment, now or in the past (domestic abuse or parental substance misuse, mental health issues or criminality, for example);
- Recent bereavement or loss;
- Social isolation or social difficulties;
- Absence of a safe environment to explore sexuality;
- Economic vulnerability;
- Homelessness or insecure accommodation status;
- Connections with other children and young people who are being sexually exploited;
- Family members or other connections involved in adult sex work;
- Having a physical or learning disability;
- Being in care (particularly those in residential care and those with interrupted care histories); and
- Sexual identity.

Child criminal exploitation

The definition of Child Criminal Exploitation, which can be found in KCSIE (2023) is:

CCE is where an individual or group takes advantage of an imbalance of power to coerce, control, manipulate or deceive a child into any criminal activity (a) in exchange for something the victim needs or wants, and/or (b) for the financial or other advantage of the perpetrator or facilitator and/or (c) through violence or the threat of violence.

The victim may have been criminally exploited even if the activity appears consensual. CCE does not always involve physical contact; it can also occur through the use of technology.

Some of the following can be indicators of CCE:

- children who appear with unexplained gifts or new possessions;
- children who associate with other young people involved in exploitation;

- children who suffer from changes in emotional well-being;
- children who misuse drugs and alcohol;
- children who go missing for periods of time or regularly come home late; and
- children who regularly miss school or education or do not take part in education.

County Lines

County lines is a term used to describe gangs and organised criminal networks involved in exporting illegal drugs (primarily crack cocaine and heroin) into one or more importing areas [within the UK], using dedicated mobile phone lines or other form of “deal line”.

Exploitation is an integral part of the county lines offending model with children and vulnerable adults exploited to move [and store] drugs and money. Offenders will often use coercion, intimidation, violence (including sexual violence) and weapons to ensure compliance of victims.

Children can easily become trapped by this type of exploitation as county lines gangs create drug debts and can threaten serious violence and kidnap towards victims (and their families) if they attempt to leave the county lines network.

Homelessness

Being homeless or being at risk of becoming homeless presents a real risk to a child’s welfare.

The DSL and deputies will be aware of contact details and referral routes in to the local housing authority so they can raise/progress concerns at the earliest opportunity (where appropriate and in accordance with local procedures).

Where a child has been harmed or is at risk of harm, the DSL will also make a referral to children’s social care.

Domestic Abuse

The definition of Domestic Abuse is:

The Domestic Abuse Act 2021 (Part 1) defines domestic abuse as any of the following behaviours, either as a pattern of behaviour, or as a single incident, between two people over the age of 16, who are 'personally connected' to each other:

- (a) physical or sexual abuse;
- (b) violent or threatening behaviour;
- (c) controlling or coercive behaviour;
- (d) economic abuse (adverse effect of the victim to acquire, use or maintain money or other property; or obtain goods or services); and
- (e) psychological, emotional or other abuse.

People are 'personally connected' when they are, or have been married to each other or civil partners; or have agreed to marry or become civil partners. If the two people have been in an intimate relationship with each other, have shared parental responsibility for the same child, or they are relatives.

The definition of Domestic Abuse applies to children if they see or hear, or experience the effects of, the abuse; and they are related to the abusive person.

(The definition can be found here: <https://www.legislation.gov.uk/ukpga/2021/17/part/1/enacted>)

Types of domestic abuse include intimate partner violence, abuse by family members, teenage relationship abuse and child/adolescent to parent violence and abuse. Anyone can be a victim of domestic abuse, regardless of sexual identity, age, ethnicity, socio-economic status, sexuality or background and domestic abuse can take place inside or outside of the home.

The National Domestic Abuse helpline can be called free of charge and in confidence, 24 hours a day on 0808 2000 247.

Operation Encompass

At John Chilton School we are working in partnership with the Metropolitan Police and Children's Services to identify and provide appropriate support to pupils who have experienced domestic incidents; this scheme is called Operation Encompass.

The purpose of Operation Encompass is to safeguard and support children and young people who have been involved in, or witness to a domestic incident. Domestic abuse impacts on children in a number of ways. Children are at increased risk of physical injury during an incident, either by accident or because they attempt to intervene. Even when not directly injured, children are greatly distressed by witnessing the physical and emotional suffering of a parent. To find out more about what is considered to be a domestic incident please take a look at the guidance from the Met Police on their website:

<https://www.met.police.uk/advice/advice-and-information/daa/domestic-abuse/what-is-domestic-abuse/>

Operation Encompass has been created to highlight this situation. It is the implementation of key partnership working between the police and schools. The aim of sharing information with local schools is to allow key adults i.e. DSL or Deputy DSL the opportunity of engaging with the child and to provide access to support that allows them to remain in a safe but secure familiar environment.

In order to achieve this, the Multi-Agency Safeguarding Hub (MASH) will notify us of all domestic incidents where one or more of our pupils has been present, to the Designated Safeguarding Lead(s) (DSL) via an online notification system. On receipt of any information, the DSL will decide on the appropriate support the child requires, this should be covert dependent on the needs and wishes of the child. All information sharing and resulting actions will be undertaken in accordance with the Metropolitan Police and MASH Encompass Protocol Data Sharing Agreement. We will record this information and store this information in accordance with the record keeping procedures outlined in this policy.

The National Domestic Abuse helpline can be called free of charge and in confidence, 24 hours a day on 0808 2000 247.

So-called 'honour-based' abuse (including FGM and forced marriage)

So-called 'honour-based' abuse (HBA) encompasses crimes committed to protect or defend the honour of the family and/or community, including FGM, forced marriage, and practices such as breast ironing.

Abuse committed in this context often involves a wider network of family or community pressure and can include multiple perpetrators.

All forms of HBA are abuse (regardless of the motivation) and will be handled and escalated as such. All staff will be alert to the possibility of a child being at risk of HBA or already having suffered it. If staff have a concern, they will speak to the DSL urgently, who will activate local safeguarding procedures.

FGM

The DSL will make sure that staff have access to appropriate training to equip them to be alert to children affected by FGM or at risk of FGM.

Section 6.3 of this policy sets out the procedures to be followed if a staff member discovers that an act of FGM appears to have been carried out or suspects that a pupil is at risk of FGM.

Female genital mutilation refers to procedures that intentionally alter or cause injury to the female genital organs for non-medical reasons. The practice is illegal in the UK.

FGM typically takes place between birth and around 15 years old; however, it is believed that the majority of cases happen between the ages of 5 and 8.

Risk factors for FGM include:

- low level of integration into UK society
- mother or a sister who has undergone FGM
- girls who are withdrawn from PSHE

- visiting female elder from the country of origin
- being taken on a long holiday to the country of origin
- talk about a 'special' procedure to become a woman

Symptoms of FGM

FGM may be likely if there is a visiting female elder, there is talk of a special procedure or celebration to become a woman, or parents wish to take their daughter out-of-school to visit an 'at-risk' country (especially before the summer holidays), or parents who wish to withdraw their children from learning about FGM. Staff should not assume that FGM only happens outside the UK.

Indications that FGM may have already taken place may include:

- difficulty walking, sitting or standing and may even look uncomfortable.
- spending longer than normal in the bathroom or toilet due to difficulties urinating.
- spending long periods of time away from a classroom during the day with bladder or menstrual problems.
- frequent urinary, menstrual or stomach problems.
- prolonged or repeated absences from school or college, especially with noticeable behaviour changes (e.g. withdrawal or depression) on the girl's return
- reluctance to undergo normal medical examinations.
- confiding in a professional without being explicit about the problem due to embarrassment or fear.
- talking about pain or discomfort between her legs

The above indicators and risk factors are not intended to be exhaustive.

Forced marriage

Forcing a person into marriage is a crime. A forced marriage is one entered into without the full and free consent of one or both parties and where violence, threats, or any other form of coercion is used to cause a person to enter into a marriage. Threats can be physical or emotional and psychological.

Staff will receive training around forced marriage and the presenting symptoms. We are aware of the 'one chance' rule, i.e. we may only have one chance to speak to the potential victim and only one chance to save them.

If a member of staff suspects that a pupil is being forced into marriage, they will speak to the pupil about their concerns in a secure and private place. They will then report this to the DSL.

The DSL will:

- Speak to the pupil about the concerns in a secure and private place
- Activate the local safeguarding procedures and refer the case to the local authority's designated officer
- Seek advice from the Forced Marriage Unit on 020 7008 0151 or fm@fco.gov.uk
- Refer the pupil to an education welfare officer, pastoral tutor, learning mentor, or school counsellor, as appropriate

The Marriage and Civil Partnership (minimum age) Act 2022 came into force in February 2023 means that 16 and 17 year olds will no longer be allowed to marry or enter a civil partnership, even if they have parental consent. Any concerns that students may be getting married should be referred to the DSL.

Preventing radicalisation

Radicalisation refers to the process by which a person comes to support terrorism and forms of extremism. Extremism is vocal or active opposition to fundamental British values, such as democracy, the rule of law, individual liberty, and mutual respect and tolerance of different faiths and beliefs.

Schools have a duty to prevent children from being drawn into terrorism. The DSL will undertake Prevent awareness training and make sure that staff have access to appropriate training to equip them to identify children at risk.

We will assess the risk of children in our school being drawn into terrorism. This assessment will be based on an understanding of the potential risk in our local area, in collaboration with our local safeguarding partners and local police force.

We will ensure that suitable internet filtering is in place, and equip our pupils to stay safe online at school and at home.

There is no single way of identifying an individual who is likely to be vulnerable to an extremist ideology. Radicalisation can occur quickly or over a long period.

Staff will be alert to changes in pupils' behaviour.

Recognising Extremism

Early indicators of radicalisation or extremism may include:

showing sympathy for extremist causes

glorifying violence, especially to other faiths or cultures

making remarks or comments about being at extremist events or rallies outside school

evidence of possessing illegal or extremist literature

advocating messages similar to illegal organisations or other extremist groups

out of character changes in dress, behaviour and peer relationships (but there are also very powerful narratives, programmes and networks that young people can come across online so involvement with particular groups may not be apparent.)

secretive behaviour

online searches or sharing extremist messages or social profiles

intolerance of difference, including faith, culture, gender, race or sexuality

graffiti, art work or writing that displays extremist themes

attempts to impose extremist views or practices on others

verbalising anti-Western or anti-British views

advocating violence towards others

Children who are at risk of radicalisation may have low self-esteem, or be victims of bullying or discrimination. It is important to note that these signs can also be part of normal teenage behaviour – staff should have confidence in their instincts and seek advice if something feels wrong.

If staff are concerned about a pupil, they will follow our procedures set out in section 7.5 of this policy, including discussing their concerns with the DSL.

Staff should **always** take action if they are worried.

Private fostering

A private fostering arrangement is one that is made privately (without the involvement of a local authority) for the care of a child under the age of 16 years (under 18, if disabled) by someone other than a parent or close relative, in their own home, with the intention that it should last for 28 days or more.

A close family relative is defined as a 'grandparent, brother, sister, uncle or aunt' and includes half-siblings and step-parents; it does not include great-aunts or uncles, great grandparents or cousins.

Parents and private foster carers both have a legal duty to inform the relevant local authority at least six weeks before the arrangement is due to start; not to do so is a criminal offence.

Whilst most privately fostered children are appropriately supported and looked after, they are a potentially vulnerable group who should be monitored by the local authority, particularly when the child has come from another country. In some cases, privately fostered children are affected by abuse and neglect, or be involved in trafficking, child sexual exploitation or modern-day slavery.

Schools have a mandatory duty to report to the local authority where they are aware or suspect that a child is subject to a private fostering arrangement. Although schools have a duty to inform the local authority, there is no duty for anyone, including the private foster carer or social workers to inform the school. However, it should be clear to the school who has parental responsibility.

School staff should notify the designated safeguarding lead when they become aware of private fostering arrangements. The designated safeguarding lead will speak to the family of the child involved to check that they are aware of their duty to inform the LA. The school itself has a duty to inform the local authority of the private fostering arrangements.

On admission to the school, we will take steps to verify the relationship of the adults to the child who is being registered.

Checking the identity and suitability of visitors

All visitors will be required to verify their identity to the satisfaction of staff and to leave their belongings, including their mobile phone(s), in a safe place during their visit.

If the visitor is unknown to the setting, we will check their credentials and reason for visiting before allowing them to enter the setting. Visitors should be ready to produce identification.

Visitors are expected to sign the visitors' book and wear a visitor's lanyard with the appropriate colour coding.

Visitors to the school who are visiting for a professional purpose, such as educational psychologists and school improvement officers, will be asked to show photo ID and:

- Will be asked to show their DBS certificate, which will be checked alongside their photo ID; or
- The organisation sending the professional, such as the LA or educational psychology service, will provide prior written confirmation that an enhanced DBS check with barred list information has been carried out

All other visitors, including visiting speakers, will be accompanied by a member of staff at all times. We will not invite into the school any speaker who is known to disseminate extremist views, and will carry out appropriate checks to ensure that any individual or organisation using school facilities is not seeking to disseminate extremist views or radicalise pupils or staff.

Non-collection of children

If a child is not collected at the end of the session/day, we will contact the SEN transport team and provider. We will liaise with the parents/carers throughout. If it is a parent, we will contact them and/or the next emergency contact to ascertain if there is a problem.

Persistent lateness will be monitored and a meeting held – an early help assessment plan or a referral to social care may be instigated.

The Protocol for Dealing with children not collected from school at the end of the school day / activity will be followed.

Missing pupils

Our procedures are designed to ensure that a missing child is found and returned to effective supervision as soon as possible. If a child goes missing, we will alert the relevant security staff and conduct a full search.